

It's a Trap!

Chess Tactics for INTERMEDIATE

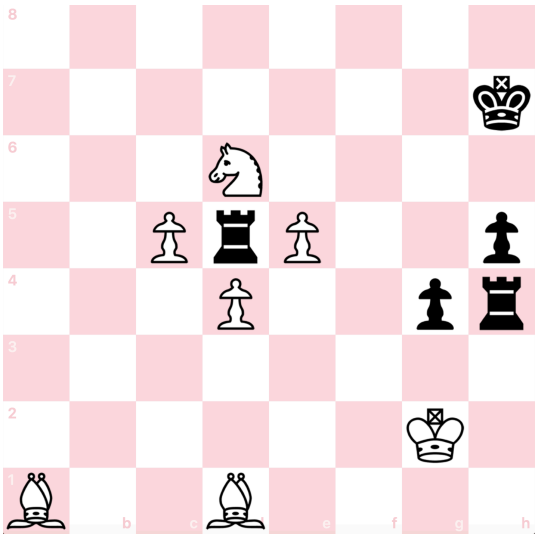


Name _____ Grade _____ Score _____

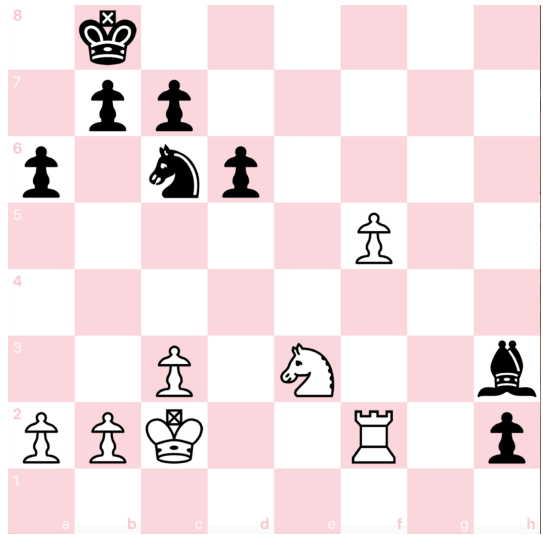
Trapping a piece is a chess tactic where a piece is attacked which has no escape and no defense!
Sadly, the piece must sit there helpless while it is captured. Such a sad end.

Using chess notation make the best move for WHITE to trap or win a TRAPPED PIECE.

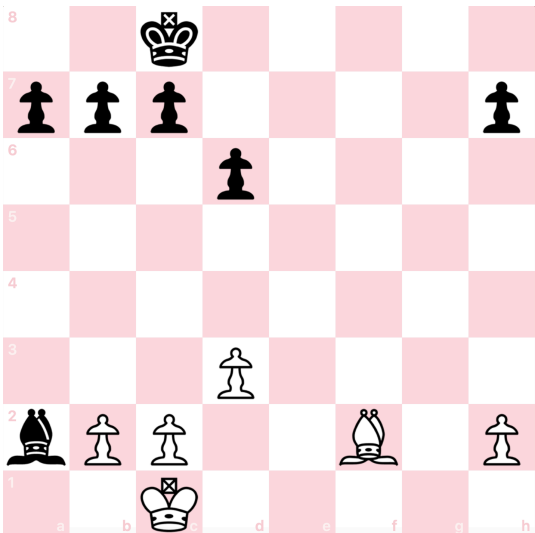
PUZZLE #1



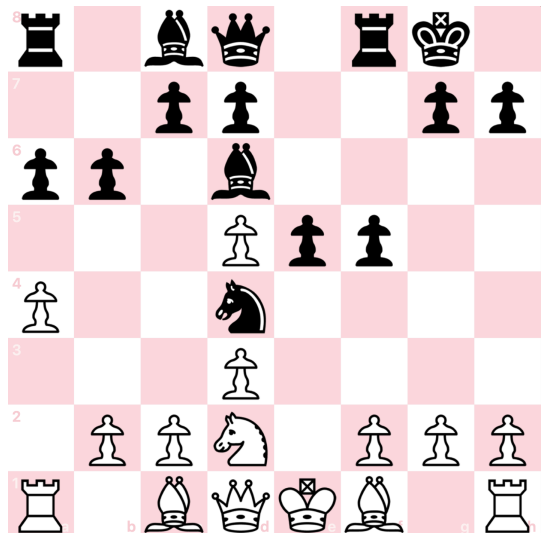
PUZZLE #2



PUZZLE #3

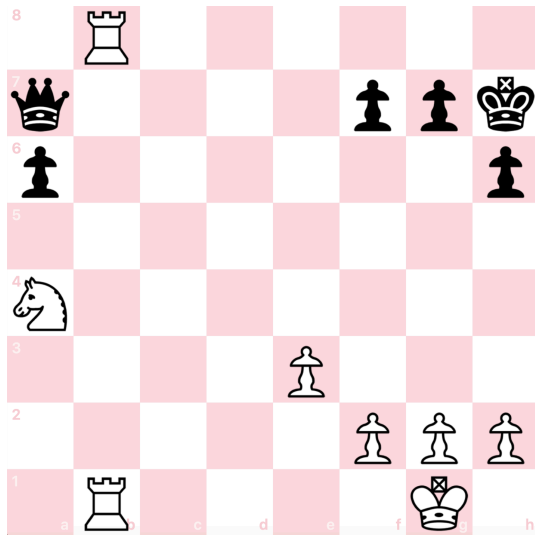


PUZZLE #4

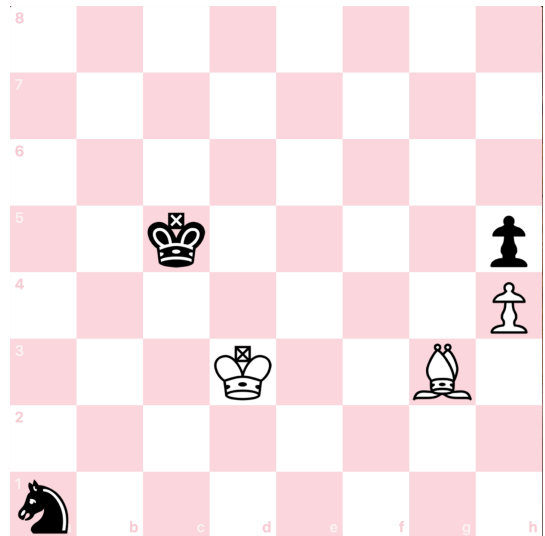


Using chess notation write the best move for white using trapped piece tactic.

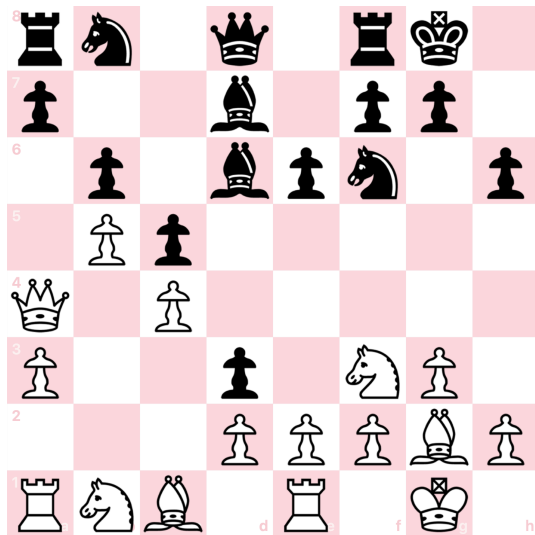
PUZZLE #5



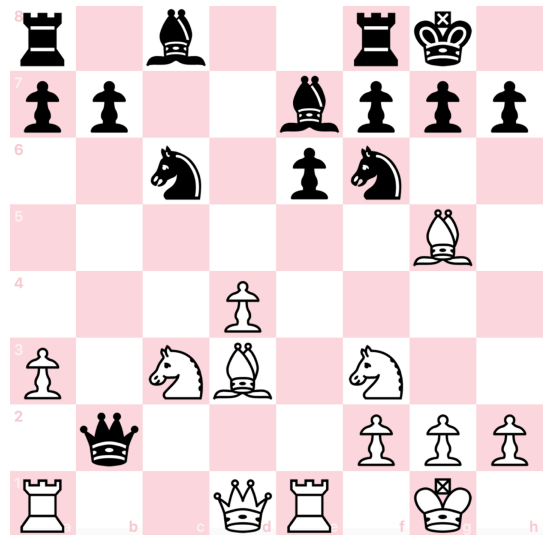
PUZZLE #6



PUZZLE #7



PUZZLE #8



GRANDMASTER TIP: The first step to trapping a piece is to find a piece that doesn't have safe squares to move to. If that piece cannot move it is trapped.

If you find a piece that has only one square it can move to, try taking away that square. Then that piece will become trapped!