



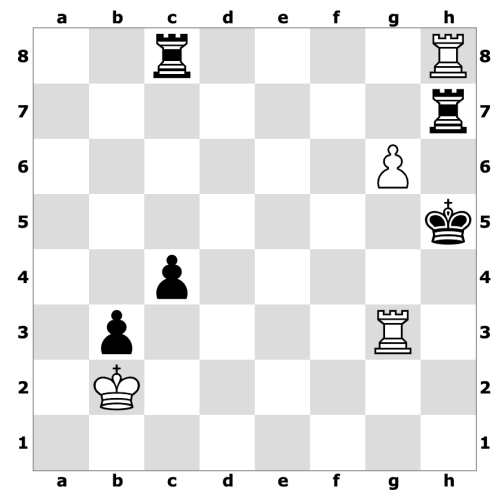
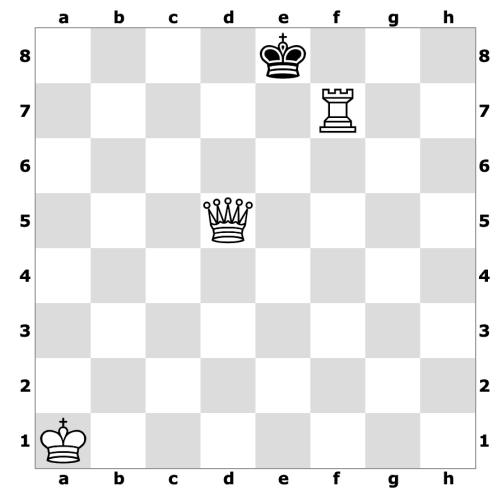
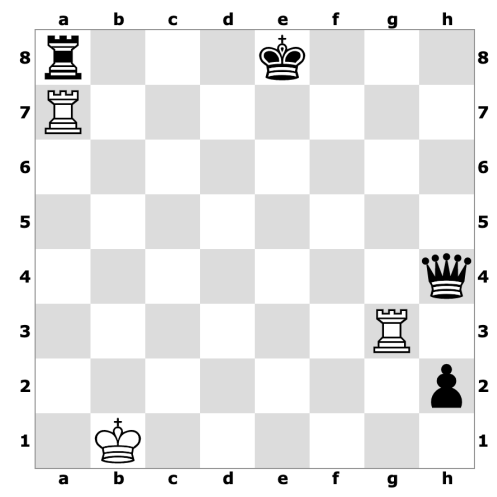
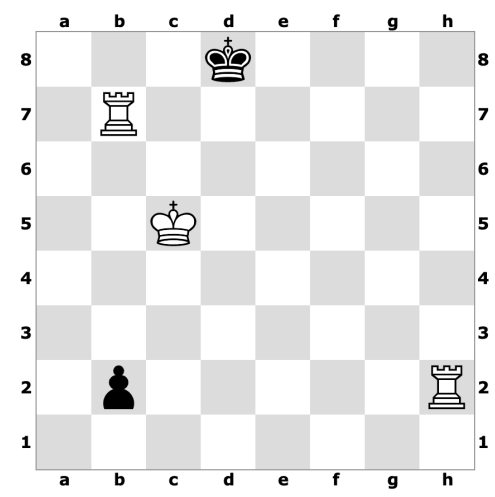
# Ladder Mate!

## Checkmates for INTERMEDIATE

Name \_\_\_\_\_ Grade \_\_\_\_\_ Score \_\_\_\_\_

It's white to play! Use *ladder mate* or *queen & rook roller* checkmating attacks to checkmate in one move.

Draw an arrow or write your move in chess notation under the position.



If you don't see a way to checkmate in one move, make the best move so that black cannot escape your checkmating attack.

Chessboard diagram 1: White king on c7, white rook on b6, white rook on a5, white king on b1. Black king on c7.

Chessboard diagram 2: White king on c5, white rook on h4, white rook on g3, white king on e1. Black king on c5.

Chessboard diagram 3: White king on e1, white queen on a5, white pawn on b6, white pawn on c4, white bishop on c3, white rook on g3, white rook on h4. Black king on d6, black pawn on a7, black pawn on b6, black pawn on c5.

Chessboard diagram 4: White king on d8, white queen on c6, white rook on g7, white pawn on h6, white rook on e1. Black king on d8, black queen on c7, black pawn on b3, black pawn on d2.

white	<input type="text"/>	<input type="text"/>	black
white	<input type="text"/>	<input type="text"/>	black
white	<input type="text"/>	<input type="text"/>	

Bonus point for advanced players!  
Show mate in 3



Bonus point!  
There are two answers!  
What is the other one?

\_\_\_\_\_